



Supplement of

The role of *ESRI* in regulating lactation traits in buffalo mammary epithelial cells

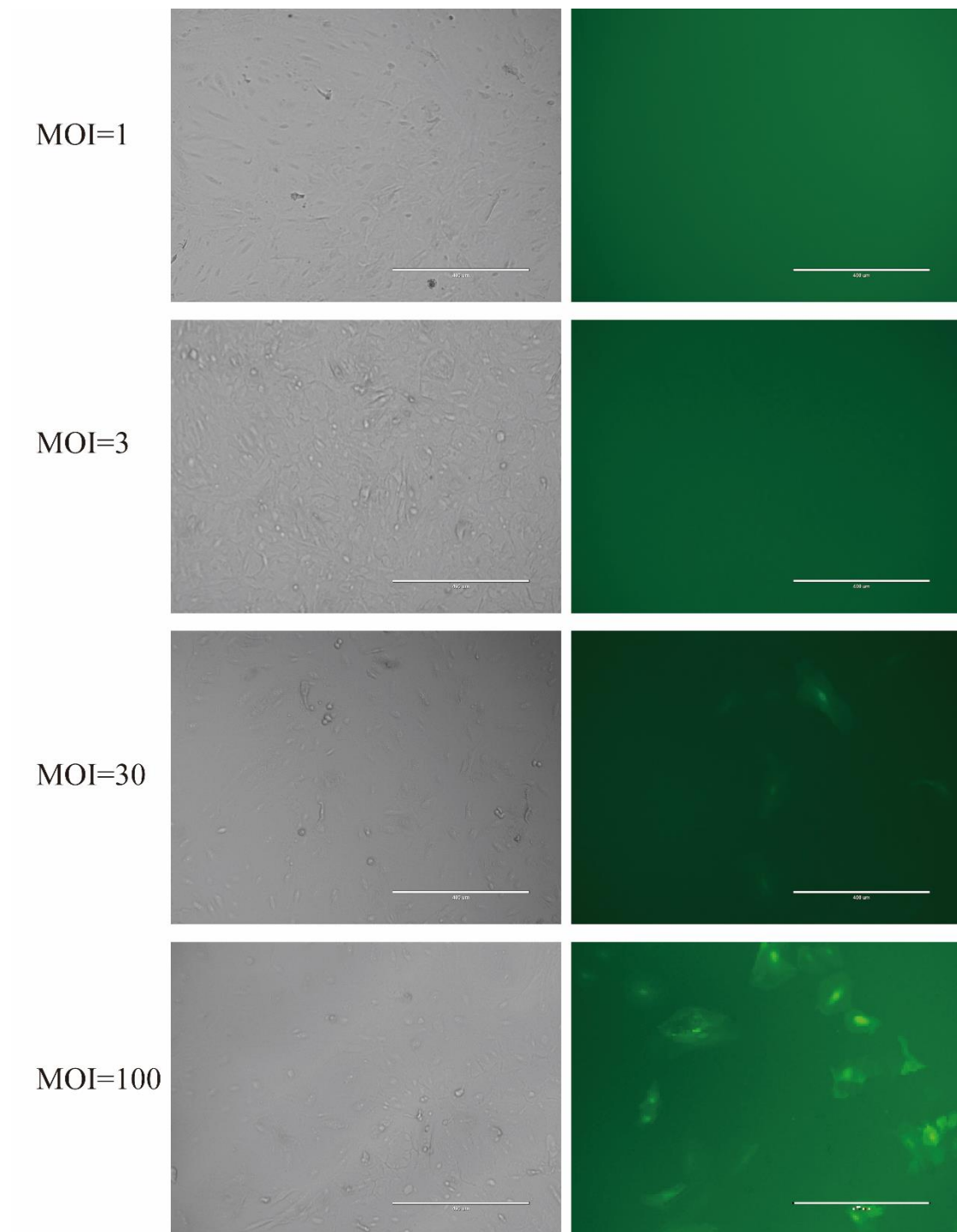
Zhixiang Wang et al.

Correspondence to: Zhipeng Li (zp.li@gxu.edu.cn)

The copyright of individual parts of the supplement might differ from the article licence.

Supplementary file:

Figure S1: Exploration of optimal MOI conditions



Fluorescent detection of buffalo mammary epithelial cells after lentivirus infection.