



*Supplement of*

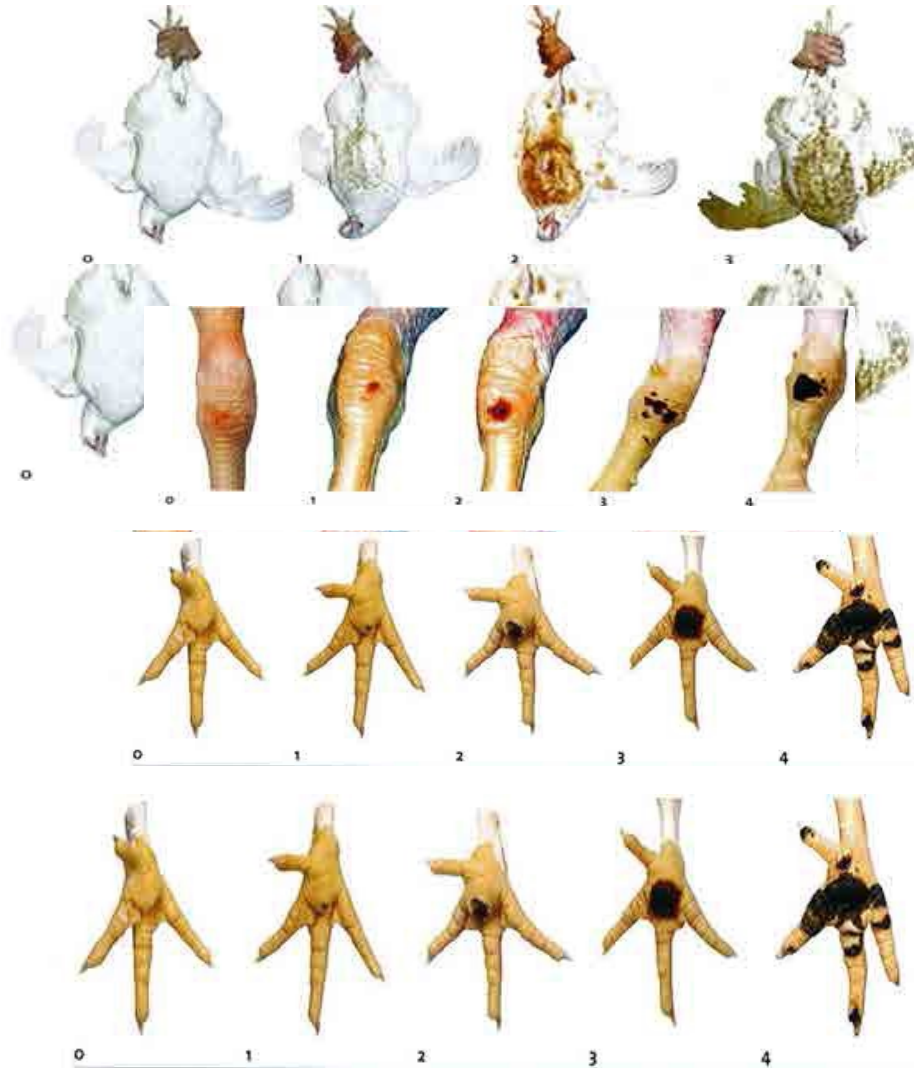
## **Effect of olive leaf incorporation in animal feed on broiler turkey (*Meleagris gallopavo*) growth performance, welfare, oxidative status, and blood and biochemical serum parameters**

Ahmed Sadoudi et al.

*Correspondence to:* Nassim Moula ([nassim.moula@uliege.be](mailto:nassim.moula@uliege.be))

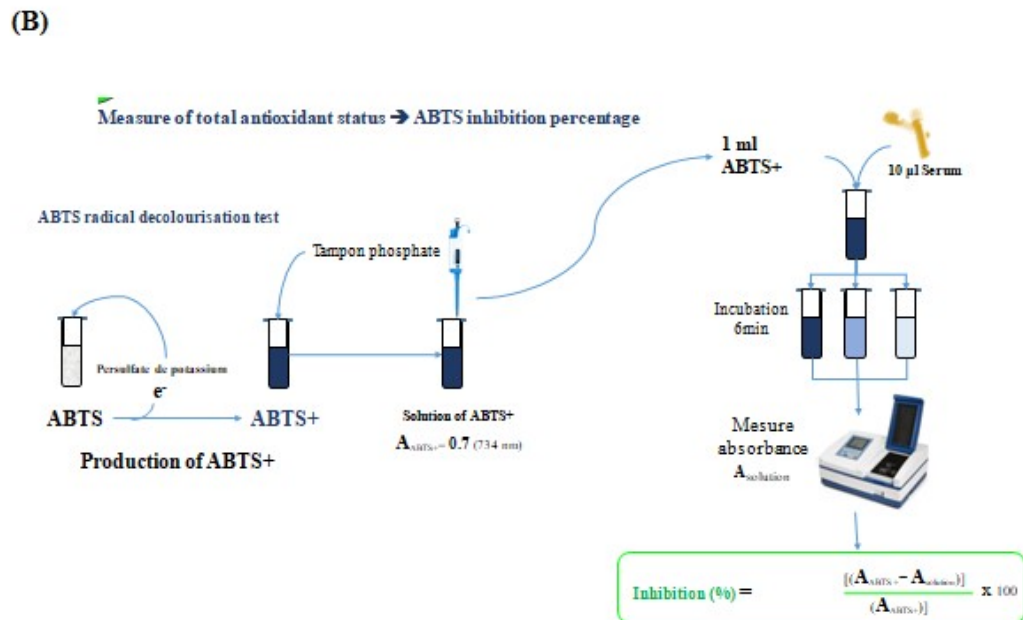
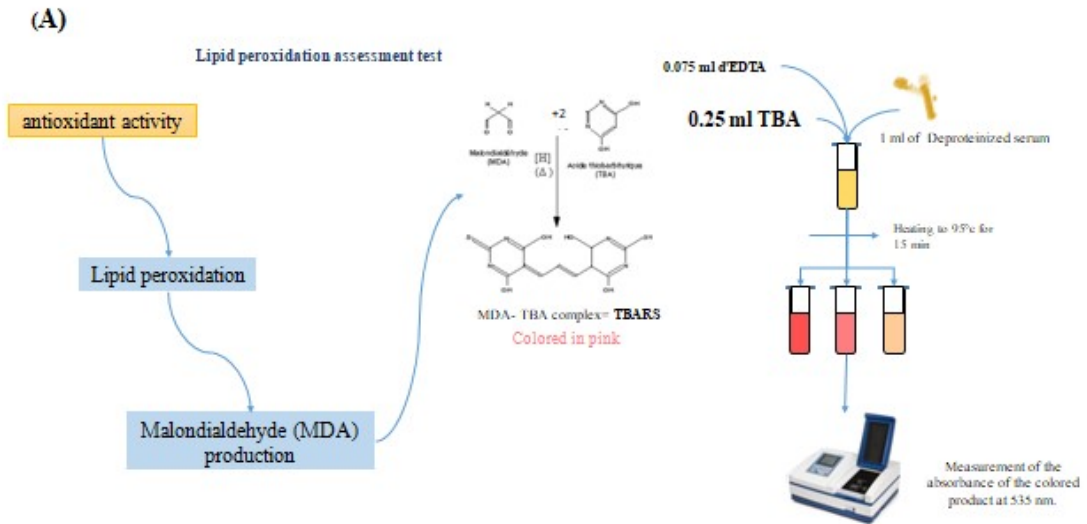
The copyright of individual parts of the supplement might differ from the article licence.

1



2

3 **Figure S1.** Scoring scale for leg lesions and feather cleanliness (Welfare Quality, 2009)



4  
5 **Figure S2.** Lipid peroxidation assessment test (A); Measure of total antioxidant status (B)

6

7