



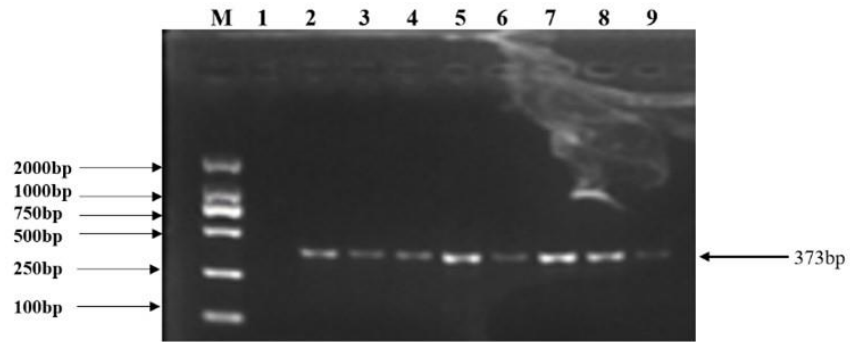
*Supplement of*

## **Genetic polymorphism of the ovine *MAP3K5* gene and its association with body size traits in Hu sheep of China**

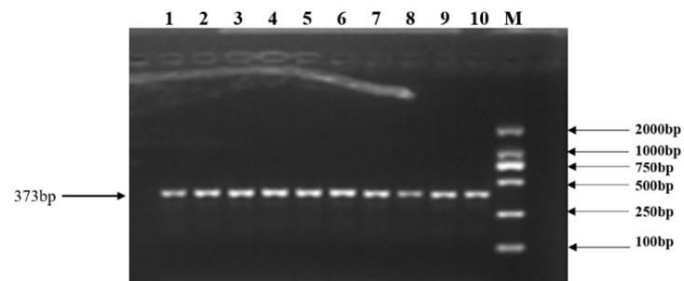
**Xiaobin Yang et al.**

*Correspondence to:* Xiaoxue Zhang (zhangxx@gsau.edu.cn)

The copyright of individual parts of the supplement might differ from the article licence.



**Supplementary Figure S1 a.** *MAP3K5* gene optimum temperature screening PCR amplification diagram. Lanes 1-9: target fragments; M: DL2000 DNA Marker.



**Supplementary Figure S1 b.** *MAP3K5* gene optimum temperature screening PCR amplification diagram. Lanes 1-10: target fragments; M: DL2000 DNA Marker.