

Supplement of Arch. Anim. Breed., 62, 537–545, 2019
<https://doi.org/10.5194/aab-62-537-2019-supplement>
© Author(s) 2019. This work is distributed under
the Creative Commons Attribution 4.0 License.



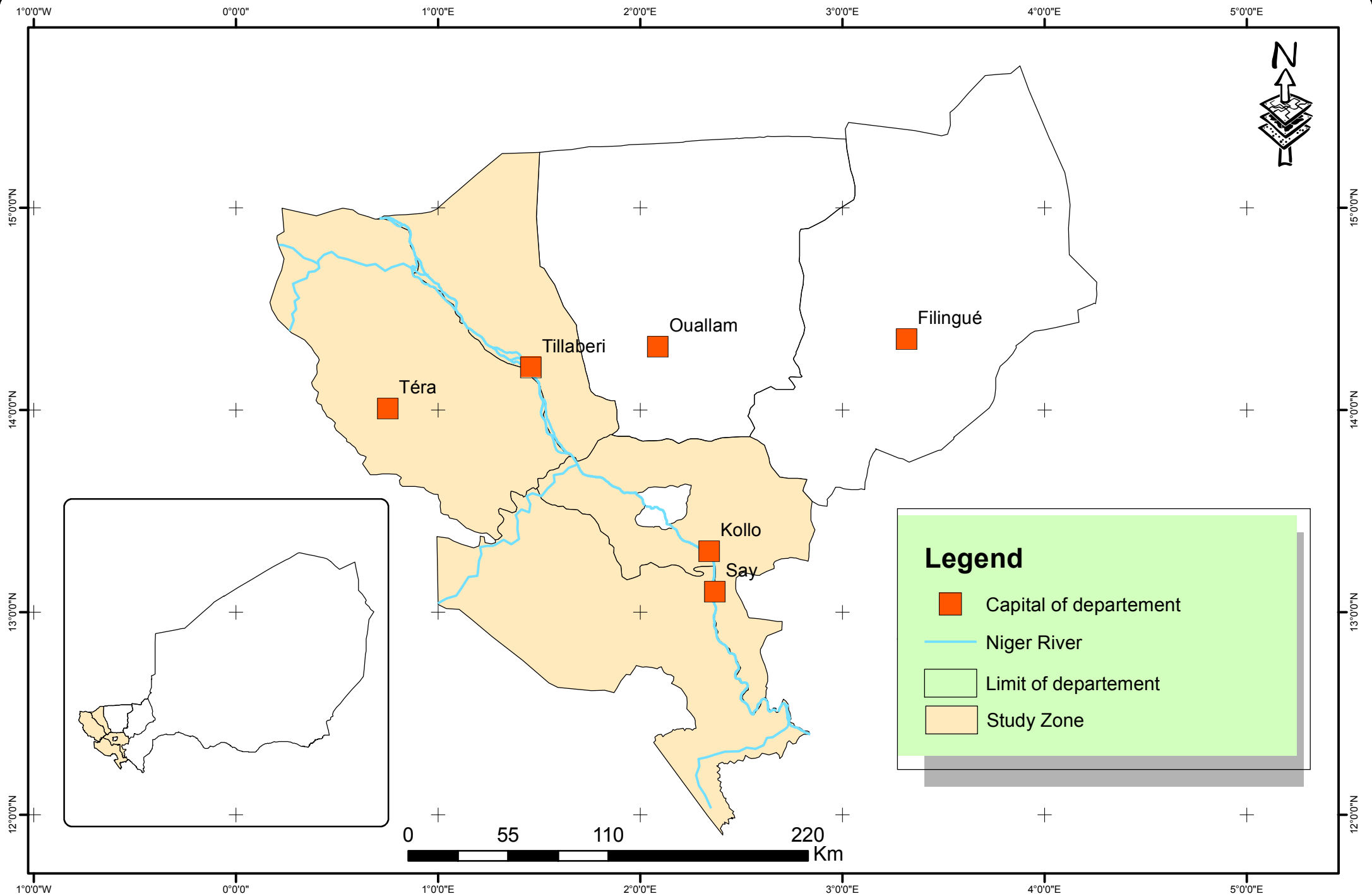
Supplement of

Valuing breeders' preferences in the conservation of the Koundoum sheep in Niger by multi-attribute analysis

Issa Hamadou et al.

Correspondence to: Nicolas Antoine-Moussiaux (nantoine@uliege.be)

The copyright of individual parts of the supplement might differ from the CC BY 4.0 License.



Legend

- Capital of departement
- Niger River
- Limit of departement
- Study Zone

Coordinate System: GCS WGS 1984
 Datum: WGS 1984
 Units: Degree

©Labo-SIG INRAN, Mars 2019, Realization : Abdou M.A Djibrilla & I. Hamadou

Source : Database IGNN